

## LED-INTA-0024V-4I-F-O

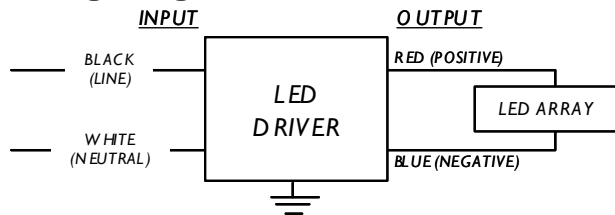
Brand Name	XITANIUM
Description	100W 24V 4.1A
Input Voltage	120~277
Input Frequency	50/60Hz
RoHS	Yes
Status	Active

### Electrical Specifications

Output Power (W)	Output Voltage (V)	Output Current (A)	T <sub>case</sub> Max	Input Current (A)	Max. Input Power (W)	Inrush Current (A <sub>pk</sub> /μs)	Max. THD (%)	Min. Power Factor	Surge Protection (KV)	Weight (Lbs/grams)	IP Rating
100	24 cv 3.5~24 cc	0.10~4.16 cv 4.16 cc	90°C	0.95@120V 0.40@277V	117	100/200	20	0.90	4.0	1.4/635	IP66

cv = constant voltage mode, cc = constant current mode

### Wiring Diagram



Input and output use lead-wires.  
Lead-wires are 18AWG 105C/600V solid copper

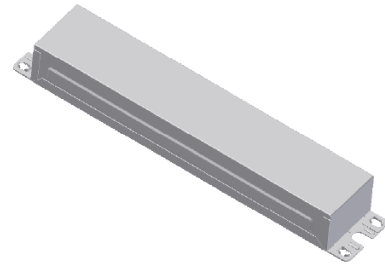
### Standard Lead Length

	in.	cm.
Black	9	22
White	9	22
Blue	26	66
Red	26	66
Gray		
Violet		

### Maximum Wiring Distance (at full load)

Wire Size (AWG)	Distance (feet)
26	3
24	4
22	7
20	11
18	18
16	29
14	46
12	71
10	120

### Enclosure



	in. (mm)
Case Length	8.34 (211.8)
Case Width	1.76 (42.5)
Case Height	1.1 (27.9)
Mounting Length	8.99 (228.4)
Mounting Width	1.22 (30.9)
Overall Length	9.45 (240)



UL Class 2  
E220165



7310\_S-000  
3426-32



Revised 12/14/2010

### PHILIPS LIGHTING N.A.

10275 WEST HIGGINS ROAD · ROSEMONT, IL 60018  
Tel: 800-322-2086 · Fax: 888-423-1882 · www.philips.com/advance  
Customer Support/Technical Service: 800-372-3331 · OEM Support: 866-915-5886

<b>LED-INTA-0024V-41-F-O</b>	
<b>Brand Name</b>	<b>XITANIUM</b>
<b>Description</b>	<b>100W 24V 4.1A</b>
<b>Input Voltage</b>	<b>120~277</b>
<b>Input Frequency</b>	<b>50/60Hz</b>
<b>RoHS</b>	<b>Yes</b>
<b>Status</b>	<b>Active</b>

## Installation & Application Notes:

### Section I – Physical Characteristics

- 1.1 LED Driver shall be installed inside an electrical enclosure
- 1.2 Wiring inside electrical enclosure shall comply with 600V/105°C rating or higher.

### Section II – Performance

- 2.1 LED Driver is UL Class 2 power unit as per UL1310. It is also listed in the UL Sign Accessory Manual (UL SAM).
- 2.2 LED Driver has Class A sound rating.
- 2.3 LED Driver has a minimum operating ambient temperature of -40°C.
- 2.4 LED Driver has a life expectancy of 50,000 hours at Tcase of ≤ 80°C.
- 2.5 LED Driver has a life expectancy of 100,000 hours at Tcase of ≤ 70°C.
- 2.6 LED Driver has a typical self rise of 30°C at maximum load in open air without heat sink.
- 2.7 LED Driver is certified by UL for use in a dry or damp location (Outdoor Type I).
- 2.8 LED Driver tolerates sustained open circuit and short circuit output conditions without damage.
- 2.9 LED Driver maximum allowable case temperature is 90°C – see product label for measurement location.
- 2.10 LED Driver reduces output power to LEDs if maximum allowable case temperature is exceeded.
- 2.11 LED Driver has a failure rate of ≤ 0.01% per 1,000 hours.
- 2.12 LED Driver complies with FCC rules and regulations, as per Title 47 CFR Part 15 Non-Consumer (Class A).
- 2.13 LED Driver conforms to EN61558-1, EN 61558-2-17 and EN 60065.

### Section III – UL Conditions of Acceptability (File E220165)

When installed in the end product, consideration shall be given to the following:

- 3.1 These LED Drivers have been evaluated to comply with Class 2 output criteria.
- 3.2 These LED Drivers are only suitable for use in Dry and Damp locations.
- 3.3 These products are rated as follows:

Model	Input, 60 Hz.			OUTPUT V@Amperes DC
	Volt/V	Amp/A	Power/W	
LEDINTA0024V41DLO	120-277	0.95-0.40	100	24V@4.1 (*)
LED-INTA-0024V-41-F-LO	120-277	0.95-0.40	100	24V@4.1 (*)
LEDINTA0024V41FO	120-277	0.95-0.40	100	24V@4.1 (*)
LED-INTA-0024V-30-F-LO	120-277	0.72-0.32	72	24@3.0 (**)
LED-INTA-0024V-30-D-LO	120-277	0.72-0.32	72	24@3.0 (**)
LED-INTA-0024V-20-F-LO	120-277	0.48-0.22	48	24@2.0 (***)
LED-INTA-0024V-20-D-LO	120-277	0.48-0.22	48	24@2.0 (***)
LEDINTA0024V32FO	120-277	0.75-0.35	77	24@3.2 (+)
LEDINTA0024V22FO	120-277	0.50-0.25	53	24@2.2 (++)

- (\*) - For connection to LED array consisting of 100 Watt maximum.  
 (\*\*) - For connection to LED array consisting of 72 Watt maximum.  
 (\*\*\*) - For connection to LED array consisting of 48 Watt maximum.

<b>LED-INTA-0024V-4I-F-O</b>	
<b>Brand Name</b>	<b>XITANIUM</b>
<b>Description</b>	<b>100W 24V 4.1A</b>
<b>Input Voltage</b>	<b>120~277</b>
<b>Input Frequency</b>	<b>50/60Hz</b>
<b>RoHS</b>	<b>Yes</b>
<b>Status</b>	<b>Active</b>

(+) - For connection to LED array consisting of 77 Watt maximum.

(++)- For connection to LED array consisting of 53 Watt maximum.

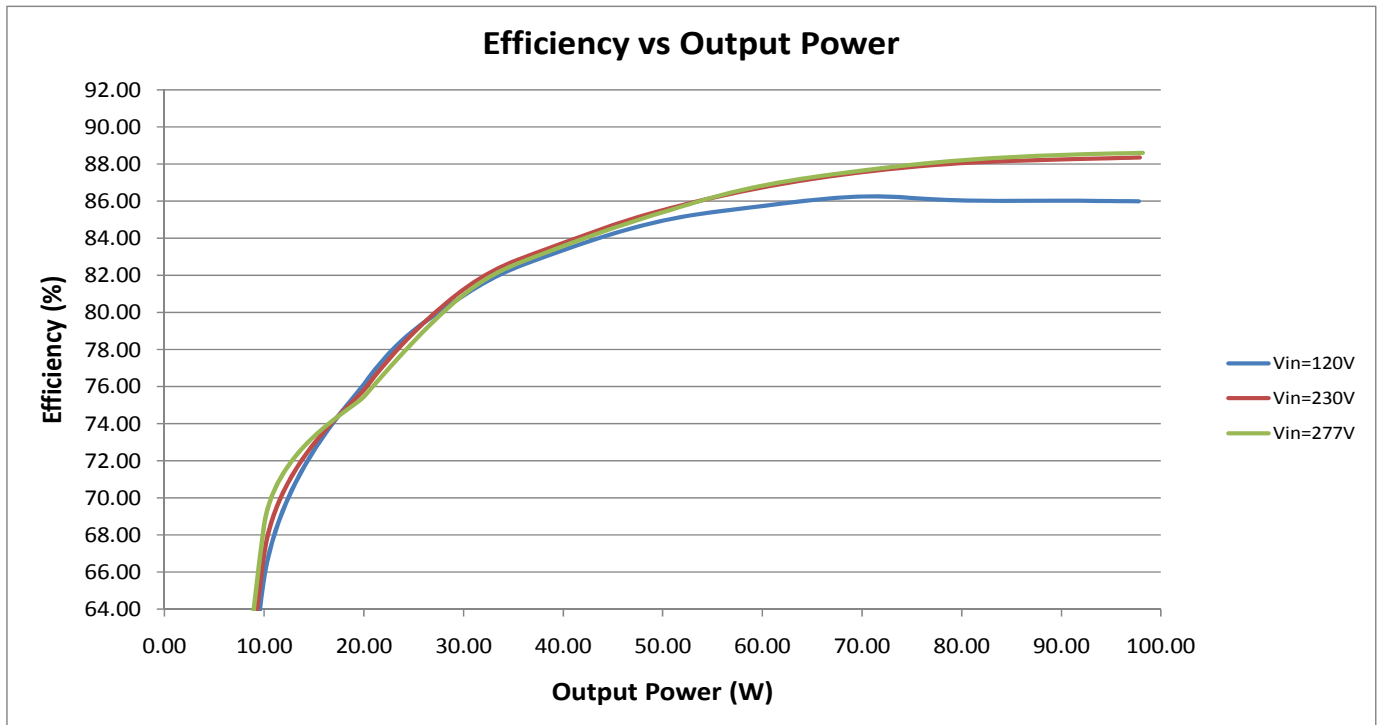
3.4 *In the end product, power supply spacing to other heat producing components shall be minimum 4 inches spacing to sidewalls, and minimum 2 inches spacing to top of enclosure and mounted not closer than 1 in. end to end or 4 in. side to side from adjacent LED power supplies.*

3.5 *The units were submitted and tested for a maximum manufacturer's recommended Tc point described in the table below. If adjacent LED power supplies are spaced close than 1 in. end to end or 4 in. side to side, a temperature test shall be conducted in the end use product.*

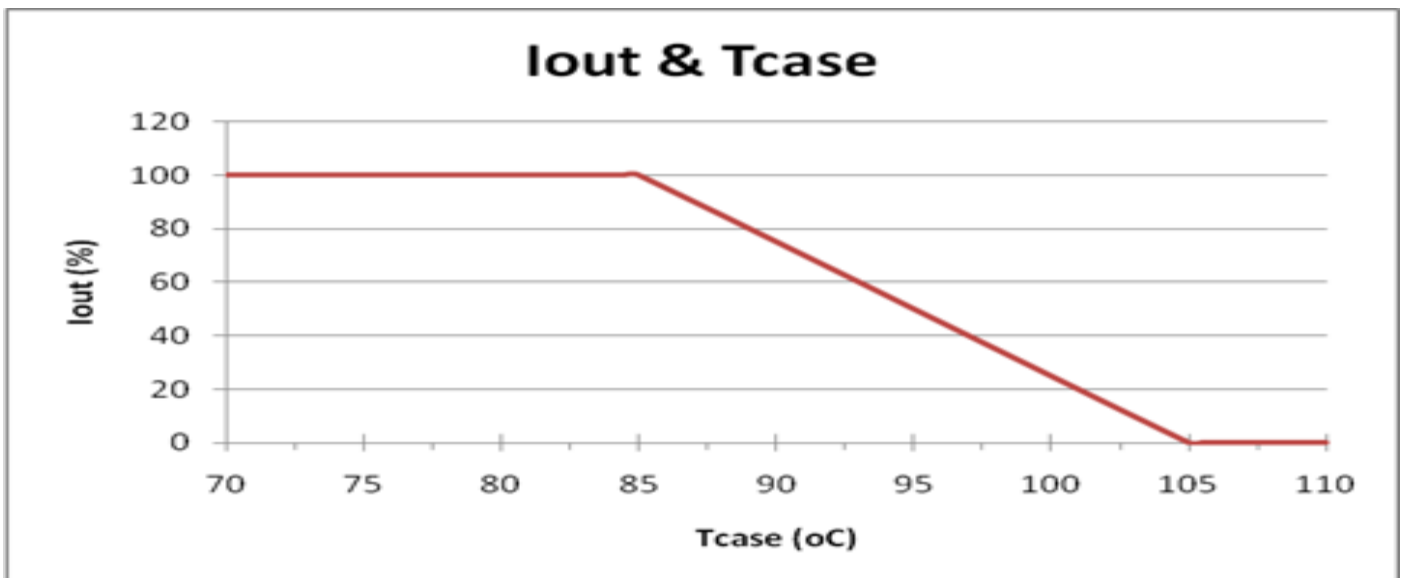
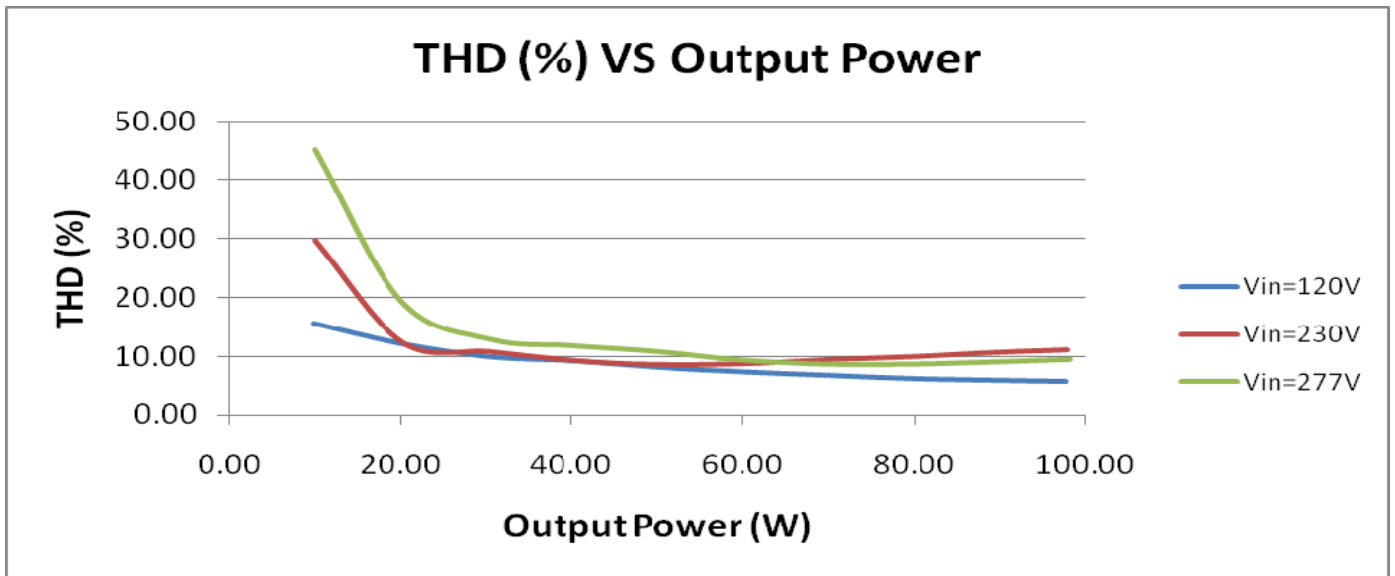
<b>Model No.</b>	<b>Input Voltage, Hz</b>	<b>Max. Case @ Tc, °C</b>	<b>Ambient, °C (Reference only)*</b>
<b>LEDINTA0024V4IDLO</b>	<b>120-277,60</b>	<b>85</b>	<b>61.5/63.2</b>
<b>LEDINTA0024V4IFO</b>	<b>120-277,60</b>	<b>90</b>	<b>56.6/59</b>
<b>LED-INTA-0024V-4I-F-LO</b>	<b>120-277,60</b>	<b>85</b>	<b>61.5/63.2</b>
<b>LED-INTA-0024V-30-D-LO</b>	<b>120-277,60</b>	<b>85</b>	<b>61.5/63.2</b>
<b>LED-INTA-0024V-30-F-LO</b>	<b>120-277,60</b>	<b>85</b>	<b>61.5/63.2</b>
<b>LED-INTA-0024V-20-D-LO</b>	<b>120-277,60</b>	<b>85</b>	<b>61.5/63.2</b>
<b>LED-INTA-0024V-20-F-LO</b>	<b>120-277,60</b>	<b>85</b>	<b>61.5/63.2</b>
<b>LEDINTA0024V32FO</b>	<b>120-277,60</b>	<b>90</b>	<b>56.6/59</b>
<b>LEDINTA0024V22FO</b>	<b>120-277,60</b>	<b>90</b>	<b>56.6/59</b>

\* - 120V/ 277V

<b>LED-INTA-0024V-4I-F-O</b>	
<b>Brand Name</b>	<b>XITANIUM</b>
<b>Description</b>	<b>100W 24V 4.1A</b>
<b>Input Voltage</b>	<b>120~277</b>
<b>Input Frequency</b>	<b>50/60Hz</b>
<b>RoHS</b>	<b>Yes</b>
<b>Status</b>	<b>Active</b>

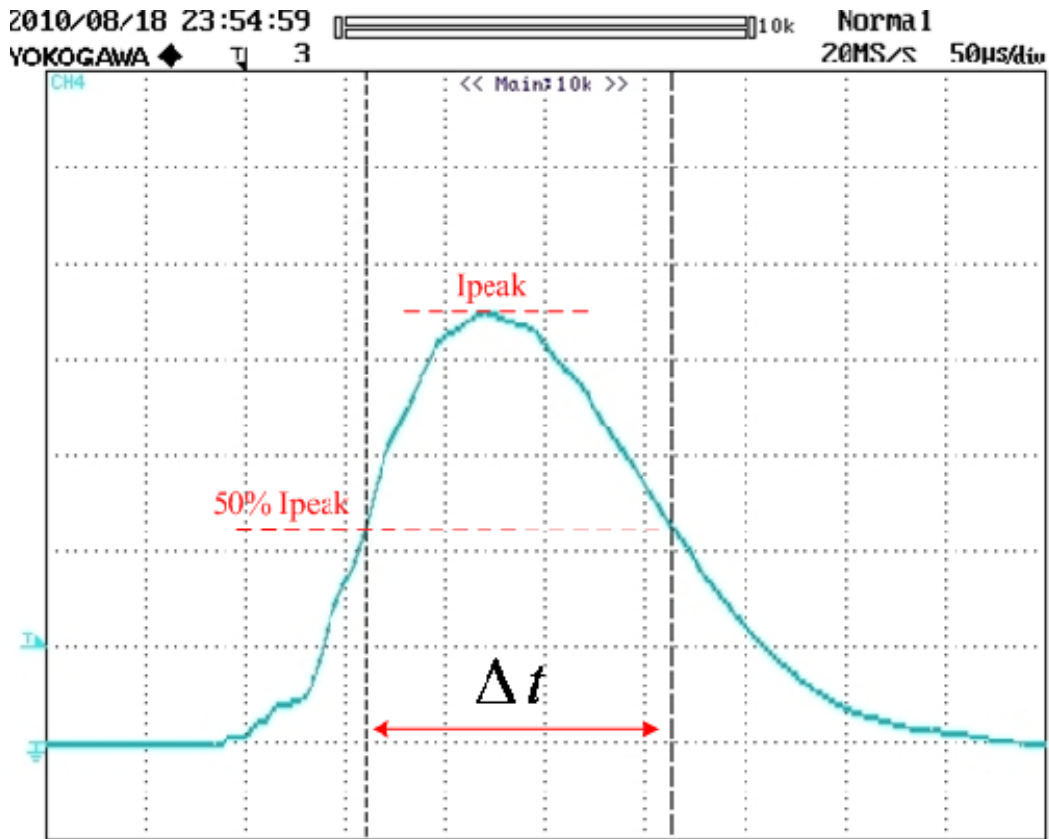


<b>LED-INTA-0024V-4I-F-O</b>	
<b>Brand Name</b>	<b>XITANIUM</b>
<b>Description</b>	<b>100W 24V 4.1A</b>
<b>Input Voltage</b>	<b>120~277</b>
<b>Input Frequency</b>	<b>50/60Hz</b>
<b>RoHS</b>	<b>Yes</b>
<b>Status</b>	<b>Active</b>



<b>LED-INTA-0024V-4I-F-O</b>	
Brand Name	XITANIUM
Description	100W 24V 4.1A
Input Voltage	120~277
Input Frequency	50/60Hz
RoHS	Yes
Status	Active

**Inrush Current Info:**



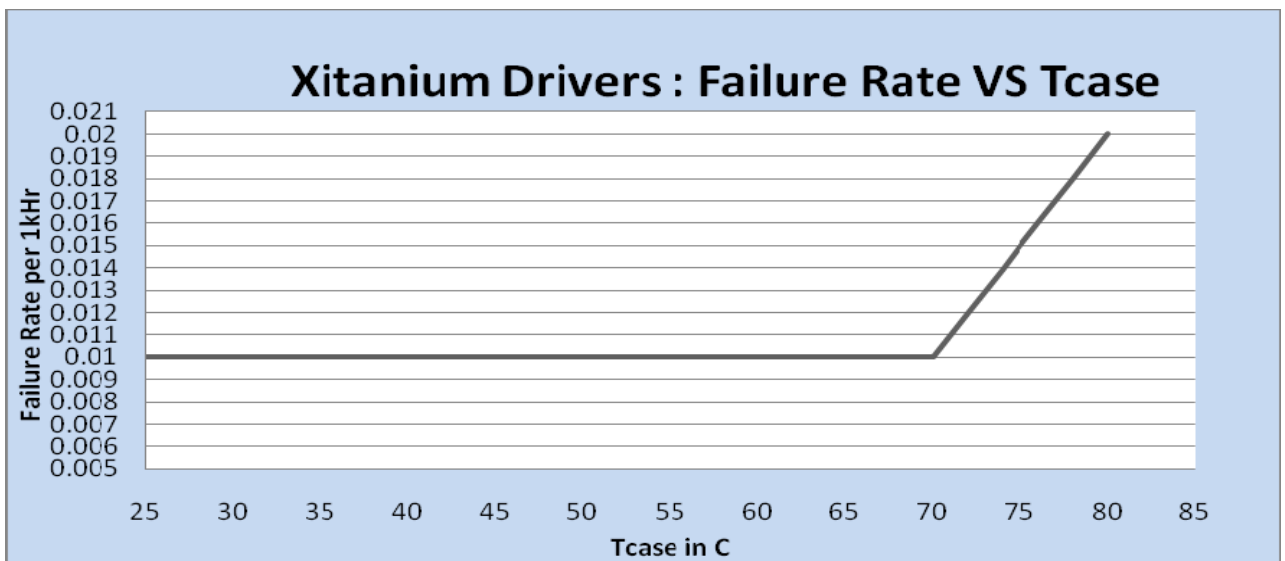
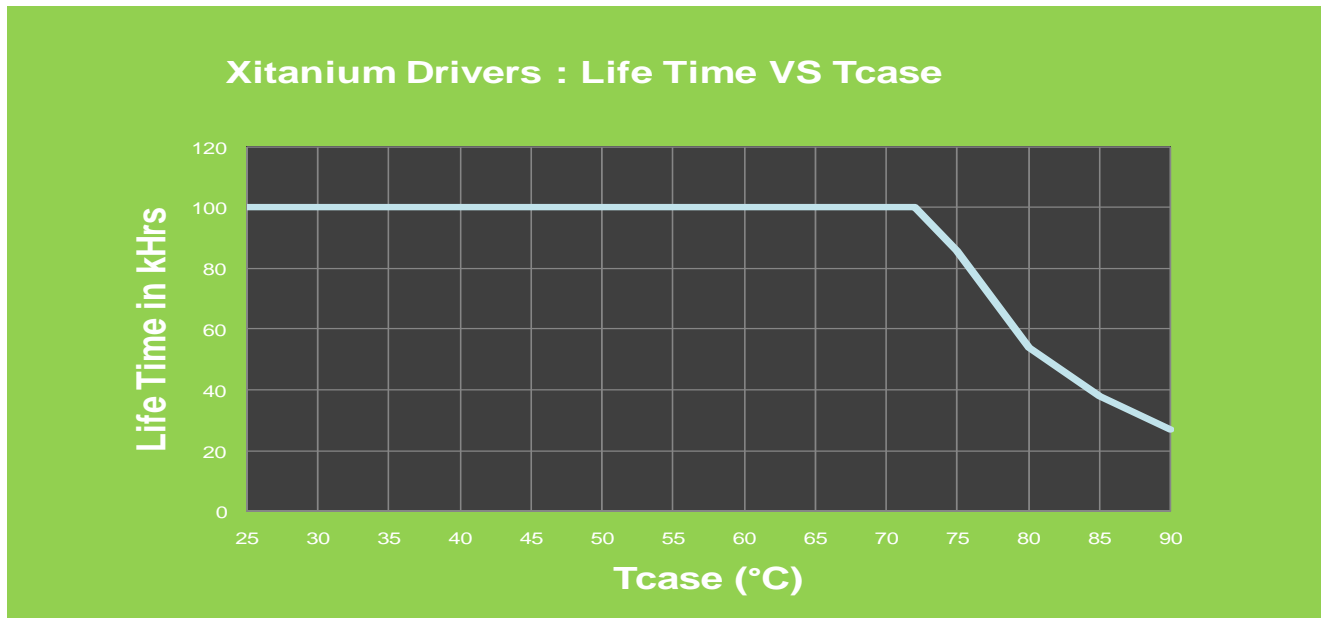
Test Voltage	Ipeak [A]	50% Ipeak [A]	Δt [uSec]
120	45	22.5	155
240	90	45	155
277	100	50	155

Revised 12/14/2010

<b>LED-INTA-0024V-4I-F-O</b>	
<b>Brand Name</b>	<b>XITANIUM</b>
<b>Description</b>	<b>100W 24V 4.1A</b>
<b>Input Voltage</b>	<b>120~277</b>
<b>Input Frequency</b>	<b>50/60Hz</b>
<b>RoHS</b>	<b>Yes</b>
<b>Status</b>	<b>Active</b>

**Life Time and Failure Rate Info:**

1. <0.01% per 1kHr



Revised 12/14/2010