

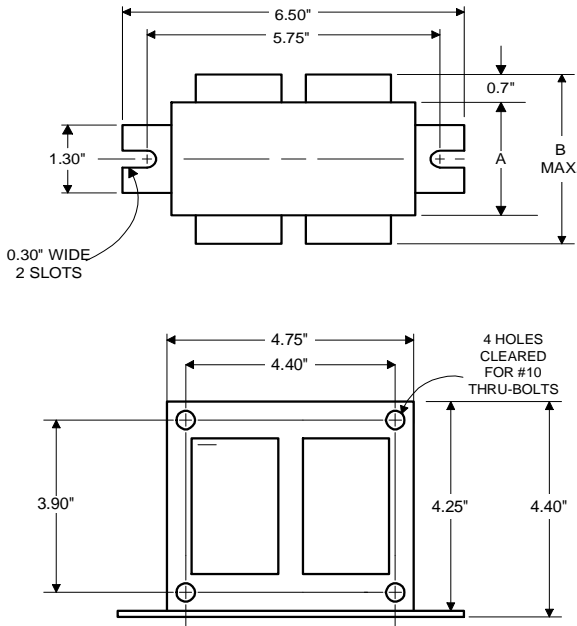


Metal Halide Lamp Ballast

Catalog Number 71A5591EE
For 175W M137/M152 (P.S.)
60 Hz SUPER-CWA
Status: Active

DIMENSIONS AND DATA

4 1/4 X 4 3/4 CORE - 2 COIL UNIT



| | 120 | 208 | 240 | 277 |
|--|----------------|-----------|-----------|-----------|
| INPUT VOLTS | | | | |
| CIRCUIT TYPE | SUPER-CWA | | | |
| POWER FACTOR (min) | 90% | | | |
| REGULATION | | | | |
| Line Volts | ±10% | | | |
| Lamp Watts | ±10% | | | |
| LINE CURRENT (Amps) | | | | |
| Operating..... | 1.66 | 0.95 | 0.83 | 0.71 |
| Open Circuit..... | 1.30 | 0.72 | 0.65 | 0.57 |
| Starting..... | 0.83 | 0.51 | 0.44 | 0.37 |
| UL TEMPERATURE RATINGS | | | | |
| Insulation Class | H(180°C) | | | |
| Coil Temperature Code | 1029 | | | |
| MIN. AMBIENT STARTING TEMP. | -20°F or -30°C | | | |
| NOM. OPEN CIRCUIT VOLTAGE | 285 | | | |
| INPUT VOLTAGE AT LAMP DROPOUT..... | 60 | 104 | 120 | 138 |
| INPUT WATTS | 198 | | | |
| RECOMMENDED FUSE (Amps)..... | 5 | 3 | 3 | 3 |
| CORE and COIL | | | | |
| Dimension (A) | 1.65 | | | |
| Dimension (B) | 3.30 | | | |
| Weight (lbs.) | 10.5 | | | |
| Lead Lengths | 12" | | | |
| CAPACITOR REQUIREMENT | | | | |
| Microfarads | 11.0 | | | |
| Volts (min.) | 370 | | | |
| Fault Current Withstand (amps) | | | | |
| 60 Hz TEST PROCEDURES (Refer to Advance Test Procedure for HID Ballasts - Form 1270) | | | | |
| High Potential Test (Volts) | | | | |
| 1 minute | 2000 | | | |
| 2 seconds | 2500 | | | |
| Open Circuit Voltage Test (Volts) | 254-310 | | | |
| Short-Circuit Current Test (Amps) | | | | |
| Secondary Current | 1.56-1.91 | | | |
| Input Current..... | 0.66-1.00 | 0.41-0.61 | 0.35-0.53 | 0.30-0.44 |

Capacitor: 7C110M40



Capacitance: 11
Dia/Oval Dim: 1.65
Height: 3.75
Temp Rating: 105°C

Wiring Diagram:

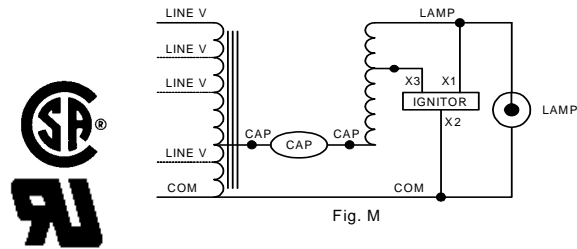


Fig. M

Ordering Information

| Order Suffix | Description |
|--------------|--|
| EE | EISA COMPLIANT - 88% EFFICIENT BALLAST |

Ignitor: LI533-H4



Ballast to Lamp Distance (BTL) = 2 feet
Temp Rating: 105°C

Data is based upon tests performed by Advance Transformer in a controlled environment and representative of relative performance. Actual performance can vary depending on operating conditions. Specifications are subject to change without notice.

ADVANCE TRANSFORMER CO.

O'HARE INTERNATIONAL CENTER · 10275 WEST HIGGINS ROAD · ROSEMONT, IL 60018
Customer Support/Technical Service: Phone: 800-372-3331 · Fax: 847-768-7768
Corporate Offices: Phone: 800-322-2086

10/26/09